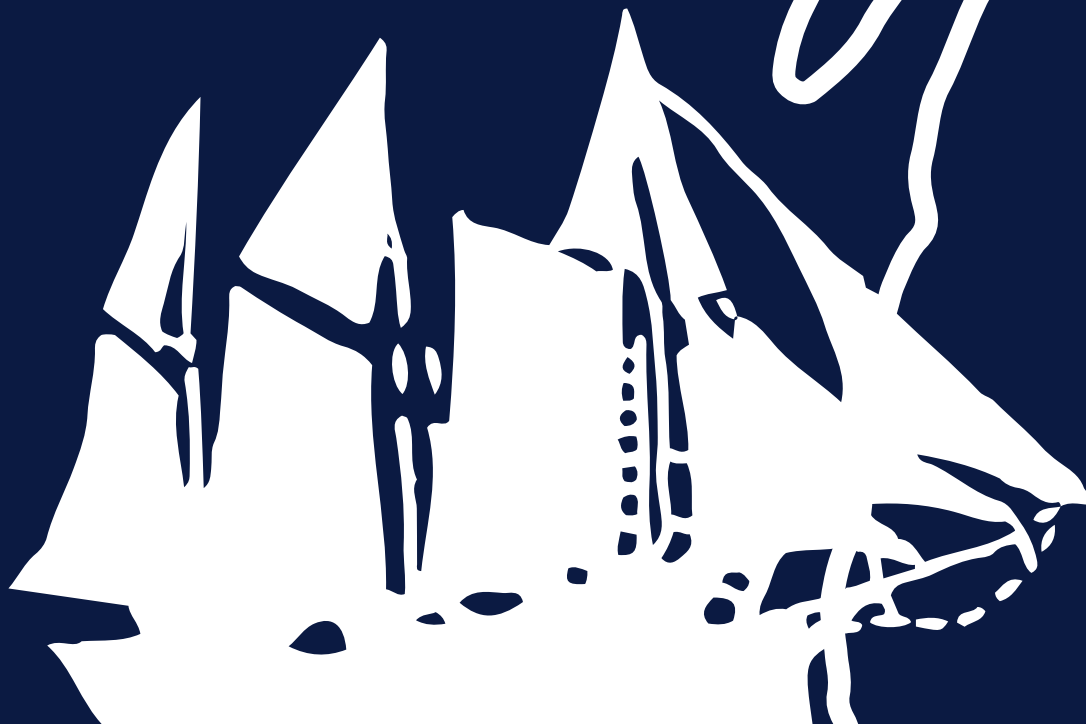


# STEP UP & DIVE IN

YEAR-END  
*Giving*



## DIRECTOR'S MESSAGE



The Wisconsin Maritime Museum is like a machine of a thousand moving parts – staff, board, volunteers, audiences, programs, partners, events and supporters. Orchestrating all these parts demands both a coherent vision and agility of execution.

Membership fees and donations received during this fund drive provide the flexibility to meet unexpected needs and respond to opportunities. Effects from SS *Badger* Car Ferry unexpectedly short season were certainly felt here at the museum. Contributions from individuals

like you mitigate uncertainty, aid short- and long-term financial stability, fill gaps and leverage other resources by providing matching funds to grants, and enhance excellence in program development and delivery.

This year is special to us. We mark 80 years since the launching of USS *Cobia*. We will be featuring special events to commemorate *Cobia's* launching, as well as entering a new phase of an ongoing campaign to fund *Cobia's* 2025 drydocking and maintenance. We hope you will join us in these efforts and events.

Cathy M. Green

A handwritten signature in cursive script that reads "Cathy M. Green".

Executive Director, Wisconsin Maritime Museum

## OUR MISSION

The Wisconsin Maritime Museum connects all people with Wisconsin's waterways, by engaging and educating the public about the Great Lakes, Wisconsin's maritime history, Wisconsin's World War II submarines and USS *Cobia*.

## OUR STORY

Since 1969, the Wisconsin Maritime Museum has grown into one of the largest museums in the region.

Every year we welcome over 40,000 visitors to explore our area's maritime history. Our mission is to connect all people with Wisconsin's waterways, by engaging and educating the public about the Great Lakes, Wisconsin's maritime history, Wisconsin's WWII submarines and USS *Cobia*.

The story of our region's vast maritime history is one we are proud to share everyday here at the museum.



Did you know that the museum has over 20,000 objects in our collection? Our collection has doubled in the past two years!



# HOW CAN YOU SUPPORT THE MUSEUM?

**VISIT** Whether stopping by to checkout a new exhibit, attend one of our programs or you just want to take a stroll through the WMM, visiting the museum with a friend or family member is one of the many ways you can support us.

**JOIN** Becoming a member of the WMM is a great way to support the museum while also gaining some great benefits for yourself & your family.

## LEGACY & ENDOWMENT

Your planned gift to the museum is an enduring legacy that will sustain us for years to come.

**VOLUNTEER** Bring your passion and share it with our visitors.

## CONTRIBUTE

Financial support from you is critical to our success. Your contribution today to our annual campaign allows us to finish the year strong and enact our plans for 2024.

Our new Funding Circles for supporters of at least \$1,000 not only connects you to the museum, but gives you special access to programs, behind the scenes tours, and Circle Member only events.

**THE DIRECTOR'S CIRCLE:** provides year round support for all parts of the museum – Special events, education programs, and operational needs

**THE CURATOR'S CIRCLE:** with over 20,000 artifacts in our collection we need your support to help care for them. This circle provides direct support to preserve our priceless historic maritime treasures.

**SILENT SERVICE CIRCLE:** dedicated to keeping USS *Cobia* in pristine condition for generations to come. Our upcoming dry dock project is crucial for long-term preservation of our beloved submarine.

Did you know that when you join as a museum member at the \$100 or more level, you receive a Council of American Maritime Museums (Camm) card that allows you to visit more than 90 maritime museums around the country FREE of charge?





# STEP UP & MAKE A DIFFERENCE *at the* MUSEUM



**SCAN NOW!** JOIN • GIVE • VOLUNTEER  
Your Contributions Float our Boat *(and so much more!)*

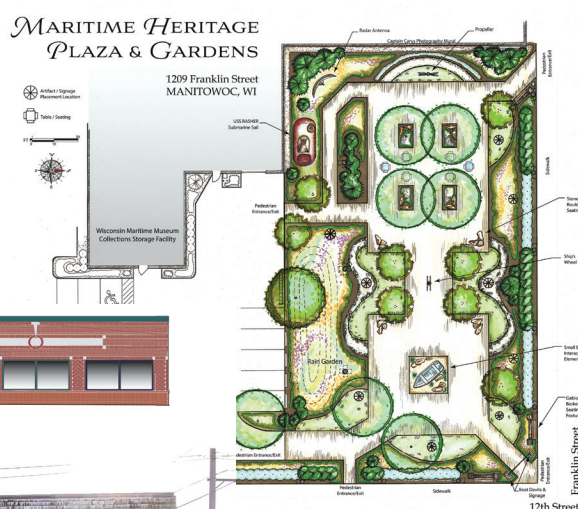


**NOTE:** It is currently illegal to remove anything from an historic shipwreck site.



**Did you know the museum carried out 8 different exhibit projects in 2023?** The new *Adriatic* exhibit features the unloading mechanism of one of the first self-unloading vessels on the Great Lakes. Five more exhibit projects are happening in 2024, including a dramatic revisioning of the Wisconsin's Underwater Treasures gallery.

**Did you know the museum is creating a second campus here in Manitowoc?** Our Franklin Street facility is currently being completely rehabbed to create a center for preservation, research, and programming. This multi-million dollar project is underway and will include a public park to spark the transformation of the Franklin Street Corridor.



*Left: Wisconsin Maritime Conservation Lab and Boat Restoration Workshop north facade restoration concept.*





## EDUCATION & PROGRAMS

**Interactive and accessible is how we approach our education programs at the museum.**

Through our hands-on Underwater Robots program, we allow students to assemble their own Remotely Operated Vehicles (ROV) and test them out in water. Our Wisconsin Underwater Treasures program allows children to be shipwreck investigators, while learning about the many shipwrecks in the Great Lakes.

In an effort to make the museum accessible to all groups we have incorporated sensory friendly programming, such as our Sensory Friendly Evenings, allowing individuals with sensory sensitivities to enjoy a more relaxed museum visit. Loud sounds are turned down and sensory backpacks are available giving individuals the opportunity to explore the museum without worry.

*Top to bottom: Underwater Robots ROV program; our very popular Scout's Overnight program; Thursday Think & Drink Program featuring historical and maritime experts.*



**In 2022 over 1,000 students participated in our ROV program, inspiring the next generation of underwater explorers.**





Top left: Annual Subfest 4th of July Celebration.  
Top right: Smoke on the Water Fundraiser at the Sub Pub.  
Left: Annual Christmas Tree Ship Day.

## EVENTS

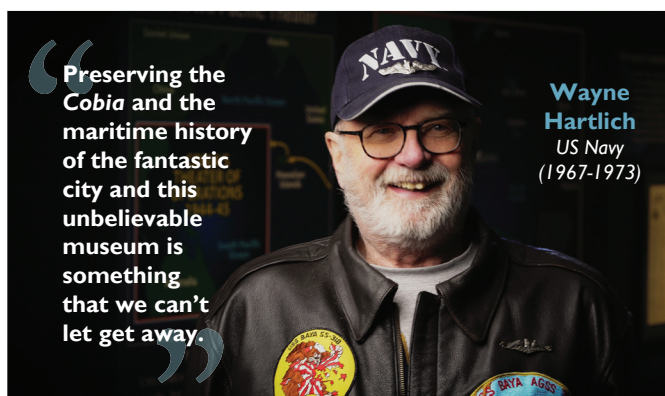
Museum events throughout the year bring new visitors to the museum, raise funds for our programs, and engage our community. Your contributions help us offer more free or reduced admission days and events every year.

## USS COBIA

Within the next two years, USS Cobia will be heading to Sturgeon Bay for some essential preservation work.

Vessels like USS Cobia were not designed to sit in the water and elements for decades, which is why it is important to dry dock her. It is proper care to dry dock vessels every 10-12 years. Cobia has not been dry docked since 1996. Nearly 27 years ago!

By dry docking USS Cobia, we can ensure that she will continue to stand as a tribute to the brave submariners that served during World War II. Perhaps most impactful, she will continue to serve as a gateway for future generations to learn about our World War II history.



“Preserving the Cobia and the maritime history of the fantastic city and this unbelievable museum is something that we can’t let get away.”

Wayne Hartlich  
US Navy  
(1967-1973)

Top left: Quote from Wayne Hartlich from WMM USS Cobia Preservation Fund campaign. Below: Cobia at dry dock in Sturgeon Bay, WI, 1996.



## USS COBIA PRESERVATION FUND



Harold Knapp honored at Subfest 2019.

On April 20, 2023 Harold Knapp, the last surviving crew member of USS Cobia passed away.

This milestone gives even more meaning to the restoration and preservation work being done on Cobia. With her original crew now all gone, we need to preserve their vessel, so that their legacy lives on.



Did you know that at this year’s Subfest on July 4th, more than 1,400 people crossed USS Cobia’s deck? Not only that, dozens of submarine veterans gathered to share stories with each other and visitors.

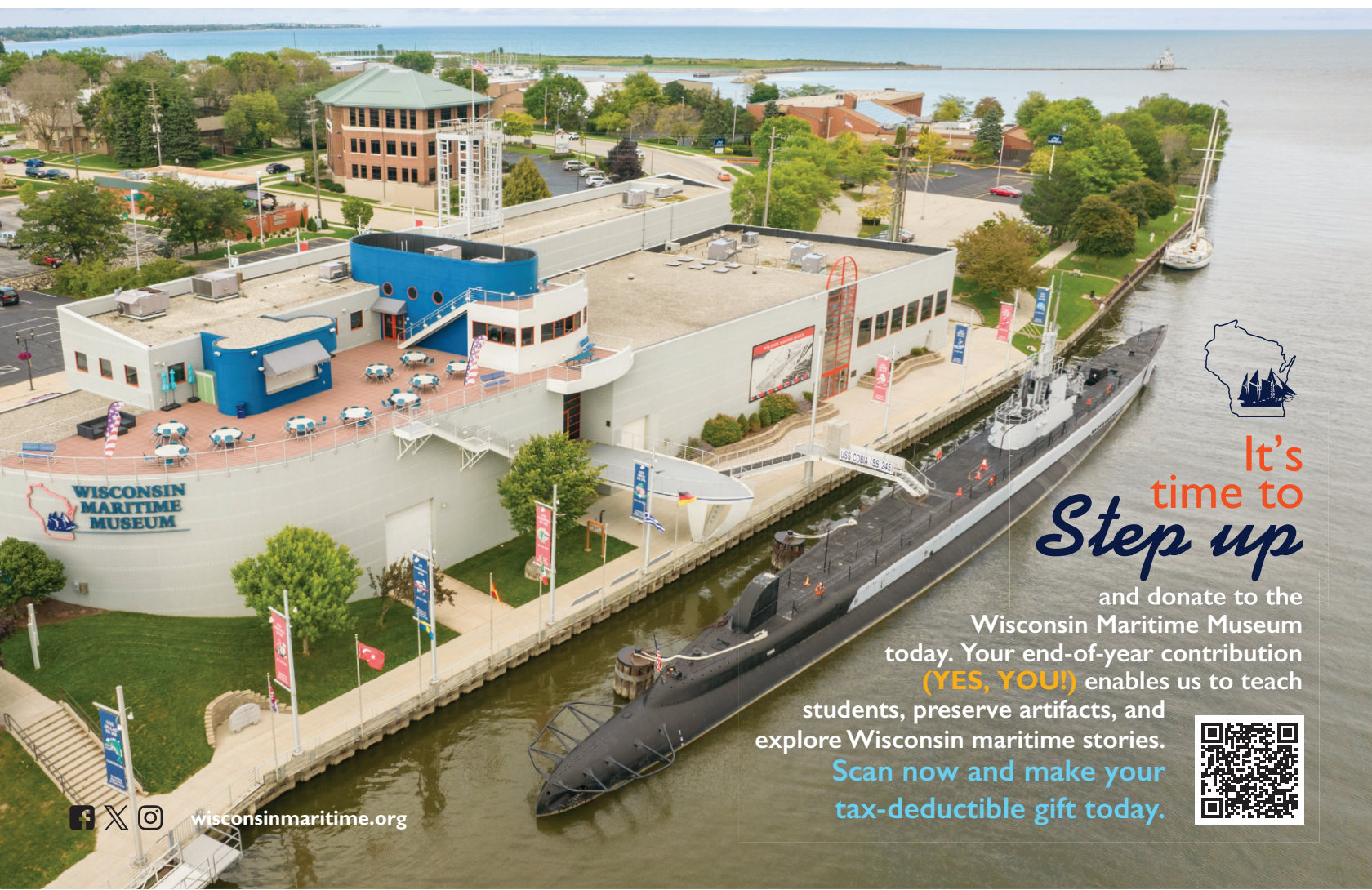






Wisconsin Maritime Museum  
75 Maritime Drive  
Manitowoc, WI 54220-6823

# YEAR-END *Giving* ANNUAL FUND



It's  
time to  
*Step up*

and donate to the  
Wisconsin Maritime Museum  
today. Your end-of-year contribution  
(YES, YOU!) enables us to teach  
students, preserve artifacts, and  
explore Wisconsin maritime stories.  
Scan now and make your  
tax-deductible gift today.



[wisconsinmaritime.org](https://www.wisconsinmaritime.org)