

# **44<sup>th</sup> Annual Midwestern Model Ships & Boats Contest**



# BRONZE

## Category I Scratch-Built Models

*Class A Vessels at scale of  $3/32'' = 1\text{foot}$  or smaller*

*Class B Vessels at any scale larger than  $3/32'' = 1\text{ foot}$*

## INTERMEDIATE

CLASS I B SCRATCH       $1/16'' = 1'$

SAM ROBERT WATSON

***CARL D. BRADLEY*** 530' ORE BOAT

SAM ROBERT WATSON **CARL D. BRADLEY** 530' ORE BOAT









# BRONZE

## Category II Kit Models

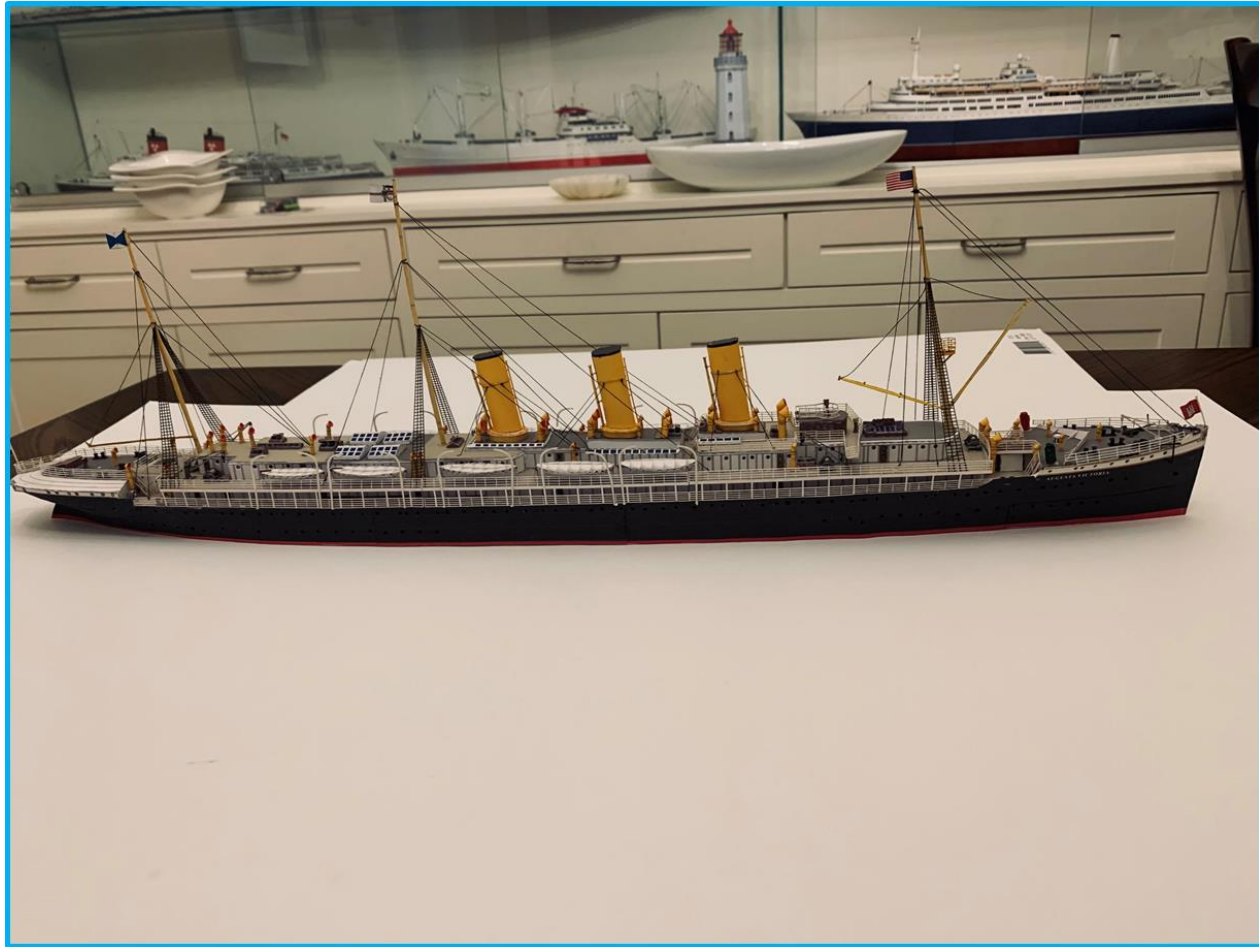
Class A: Wood of any scale

Class B: Plastic of any scale

## NOVICE

CLASS II A KIT – PAPER SCALE 1:250

RALF SCHNURBUSCH **LINER *AUGUSTA VICTORIA***







# BRONZE

## Category II Kit Models

Class A: Wood of any scale

Class B: Plastic of any scale

## NOVICE

CLASS II A - KIT - WOOD SCALE 1:50

ROBERT MAINS ***SWIFT*** 1804 PILOT BOAT







# BRONZE

## Category II Kit Models

Class A: Wood of any scale

Class B: Plastic of any scale

## INTERMEDIATE

CLASS II A - KIT - WOOD SCALE  $1/8'' = 1'$

PAUL VIDANI ***PORTLAND***







# BRONZE

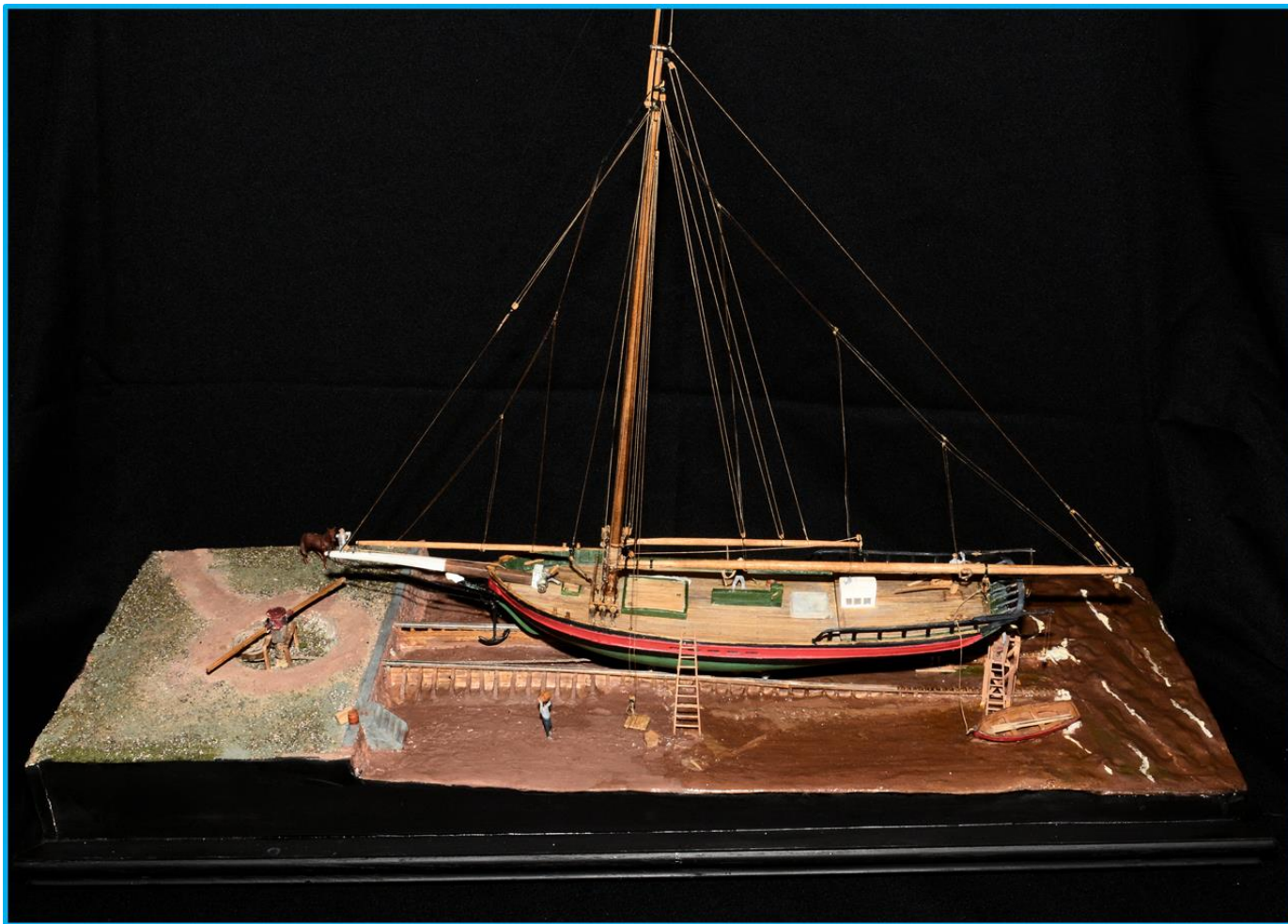
## Category IV Dioramas

### NOVICE

DIORAMA SCALE  $3/16" = 1'$

PETER STERNBERG ***VICTORINE***  
HAULED OUT ON A GREASEWAY





# SILVER

## Category I Scratch-Built Models

Class A Vessels at scale of  $3/32" = 1\text{foot}$  or smaller  
Class B Vessels at any scale larger than  $3/32" = 1\text{ foot}$

## NOVICE

CLASS I B SCRATCH 1/64

ERIC REUTER **ARABIA** STEAM SIDEWHEEL  
RIVERBOAT







# SILVER

## **Category I Scratch-Built Models**

*Class A Vessels at scale of  $3/32"$  = 1 foot or smaller  
Class B Vessels at any scale larger than  $3/32"$  = 1 foot*

## **ADVANCED**

CLASS I B SCRATCH 1/96

FRANK LESS'ARDT    **SS WANDO** CONFEDERATE  
BLOCKADE RUNNER









# SILVER

## Category II                      Kit Models

Class A: Wood of any scale

Class B: Plastic of any scale

## NOVICE

CLASS II A   KIT – WOOD      1:72

DANIEL PACHOLSKI    ***HMS HUNTER***









# SILVER

## Category II Kit Models

Class A: Wood of any scale

Class B: Plastic of any scale

## NOVICE

CLASS II A KIT WOOD 1/48

PETER STERNBERG ***KATY*** VIRGINIA  
PILOT BOAT







**SILVER**

**Category II Kit Models**

Class A: Wood of any scale

Class B: Plastic of any scale

**ADVANCED**

CLASS II A KIT 1:72

SAMUEL PARENT ***BRITISH CUTTER***







# GOLD

## Category I Scratch-Built Models

Class A Vessels at scale of  $3/32'' = 1\text{foot}$  or smaller

Class B Vessels at any scale larger than  $3/32'' = 1\text{ foot}$

## NOVICE

CLASS I B SCRATCH 1:16

BILL FRENCH ***GON WAKI III***









# GOLD

## Category I Scratch-Built Models

Class A Vessels at scale of  $3/32'' = 1\text{foot}$  or smaller

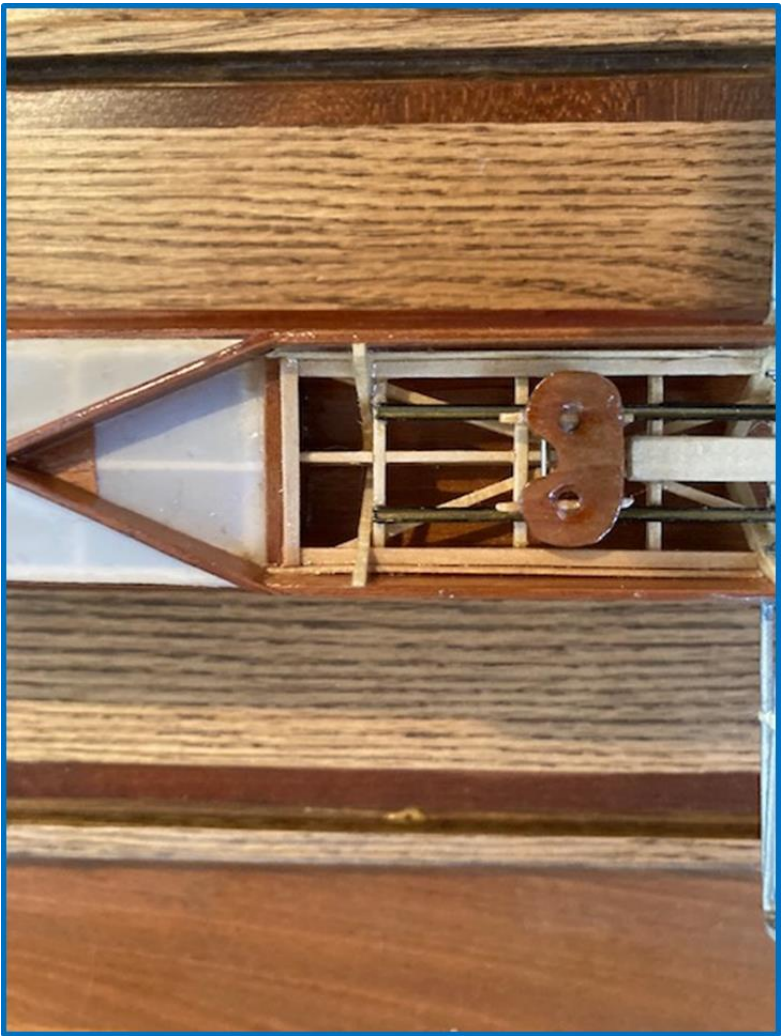
Class B Vessels at any scale larger than  $3/32'' = 1\text{ foot}$

## INTERMEDIATE

CLASS I B SCRATCH 1:12

RICHARD STEHLIK    ***THE FRED WEISS***  
STAMPFLI QUADRUPLE RACING SHELL







# **GOLD**

## **Category I Scratch-Built Models**

Class A Vessels at scale of  $3/32'' = 1\text{foot}$  or smaller

Class B Vessels at any scale larger than  $3/32'' = 1\text{ foot}$

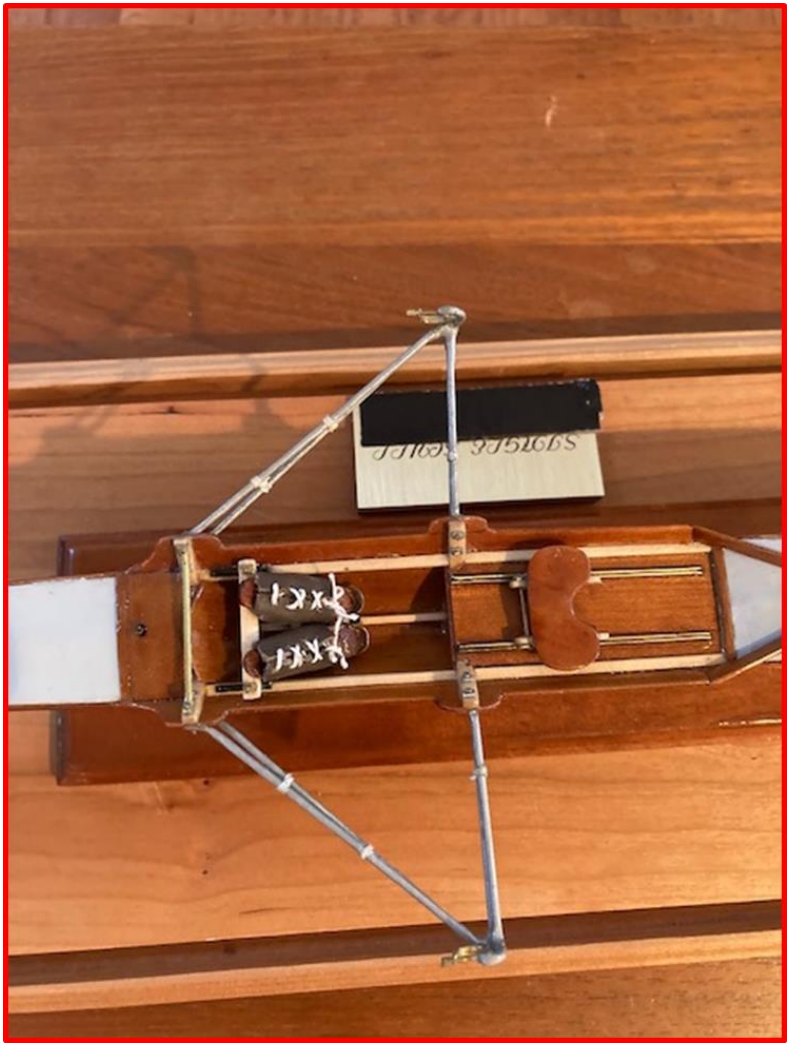
## **INTERMEDIATE**

CLASS I B SCRATCH 1:12

RICHARD STEHLIK

STAMPFLI SINGLE RACING SHELL





# GOLD

## Category I Scratch-Built Models

Class A Vessels at scale of  $3/32'' = 1\text{foot}$  or smaller

Class B Vessels at any scale larger than  $3/32'' = 1\text{ foot}$

## INTERMEDIATE

CLASS I B SCRATCH  $1/8'' = 1'$

NICHOLAS DOMBROWSKI     ***SS WILLAPA***







# GOLD

## Category I Scratch-Built Models

Class A Vessels at scale of  $3/32'' = 1\text{foot}$  or smaller

Class B Vessels at any scale larger than  $3/32'' = 1\text{ foot}$

## INTERMEDIATE

CLASS I B SCRATCH 1/48

KEVIN HUDSON ***GALLEY WASHINGTON***







# GOLD

## Category I Scratch-Built Models

Class A Vessels at scale of  $3/32'' = 1\text{foot}$  or smaller

Class B Vessels at any scale larger than  $3/32'' = 1\text{ foot}$

## ADVANCED

CLASS I A SCRATCH 1:384

GUS AGUSTIN     ***HMS SUSSEX***









# GOLD

## Category I Scratch-Built Models

Class A Vessels at scale of  $3/32'' = 1\text{foot}$  or smaller

Class B Vessels at any scale larger than  $3/32'' = 1\text{ foot}$

## ADVANCED

CLASS I B SCRATCH 1/48

DAVID SAARINEN ***SYREN*** US NAVY BRIG





# GOLD

## Category I Scratch-Built Models

Class A Vessels at scale of  $3/32'' = 1\text{foot}$  or smaller

Class B Vessels at any scale larger than  $3/32'' = 1\text{ foot}$

## ADVANCED

CLASS I B SCRATCH 1/48

WILLIAM SPROUL    **ARMED VIRGINIA SLOOP - GENERIC**







# GOLD

## Category I Scratch-Built Models

Class A Vessels at scale of  $3/32'' = 1\text{foot}$  or smaller

Class B Vessels at any scale larger than  $3/32'' = 1\text{ foot}$

## ADVANCED

CLASS I B SCRATCH 1/36

WILLIAM SPROUL ***LA BELLE***











**GOLD**

**Category II Kit Models**

Class A: Wood of any scale

Class B: Plastic of any scale

**NOVICE**

CLASS II A KIT – WOOD 1/48

DANIEL PACHOLSKI     ***BENJAMIN W. LATHAM***









# **GOLD**

## **Category II Kit Models**

Class A: Wood of any scale

Class B: Plastic of any scale

## **NOVICE**

CLASS II A KIT – WOOD 1/64

TIM MORRISON ***HM CUTTER LADY  
NELSON***







**GOLD**

**Category II Kit Models**

Class A: Wood of any scale

Class B: Plastic of any scale

**ADVANCED**

CLASS II A KIT WOOD 1:12

SAMUEL PARENT ***PETERBORO CANOE***









**GOLD**

**Category II Kit Models**

Class A: Wood of any scale

Class B: Plastic of any scale

**ADVANCED**

CLASS II A KIT WOOD 1:12

DAN CICERO ***SKIFF***











**GOLD**

**Category II Kit Models**

Class A: Wood of any scale

Class B: Plastic of any scale

**ADVANCED**

CLASS II A KIT WOOD 1/72

WILLIAM NYBERG ***SKIPJACK***  
CHESAPEAKE BAY OYSTER DREDGE







# **GOLD**

## **Category II Kit Models**

Class A: Wood of any scale

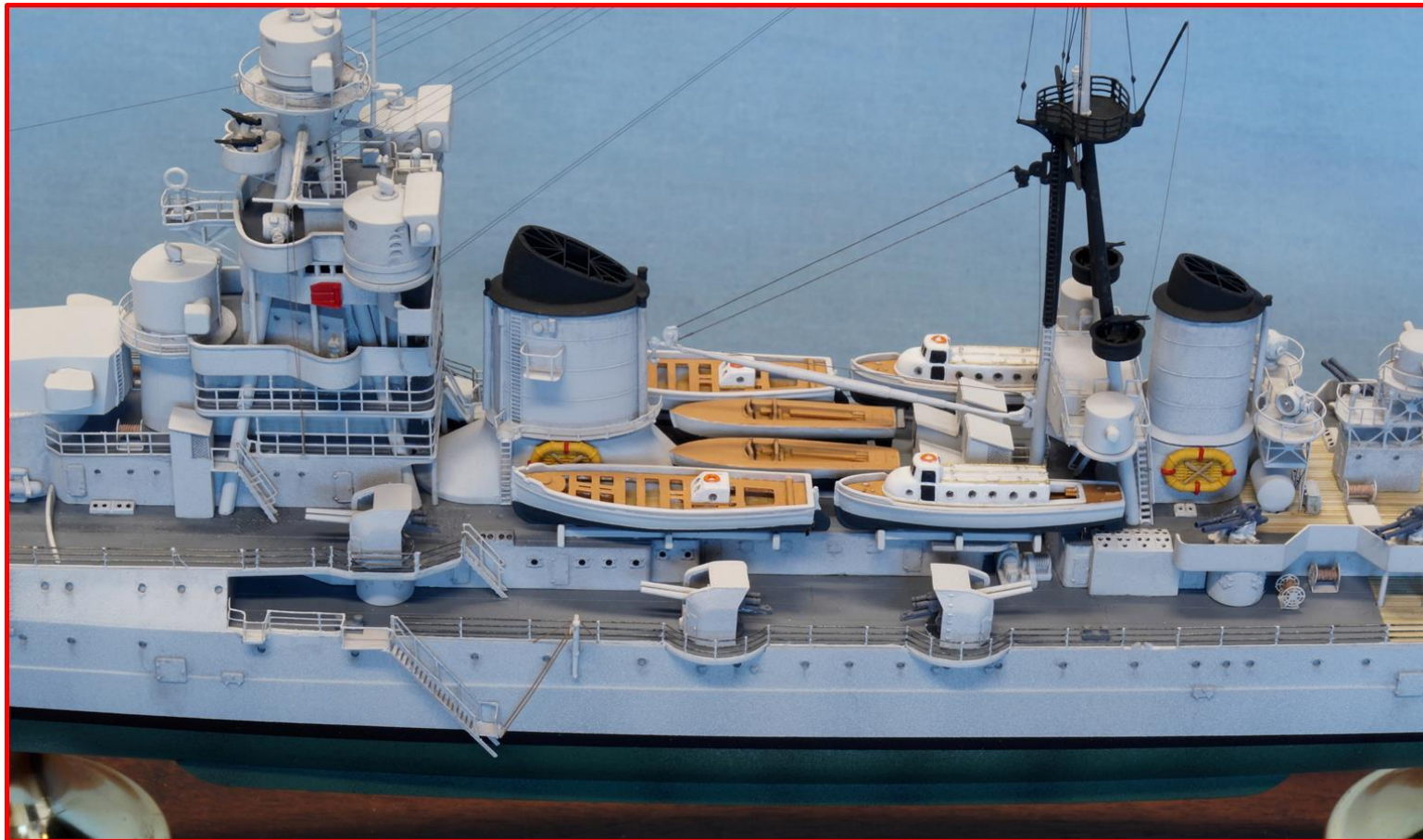
Class B: Plastic of any scale

## **ADVANCED**

CLASS II B KIT PLASTIC 1/350

**CHUCK BAUER *ZARA***  
**ITALIAN NAVY HEAVY CRUISER**





# GOLD

## Category II Kit Models

Class A: Wood of any scale

Class B: Plastic of any scale

## ADVANCED

CLASS II B KIT PLASTIC 1/350

CHUCK BAUER **VARYAG**  
RUSSIAN MISSILE CRUISER









**GOLD**

**Category III Operational Models**

**INTERMEDIATE**

CATEGORY III OPERATIONAL 3/8"=1'

GREGG ZUREK ***SEGUIN*** 1880s STEAM  
TUG



*Seguin - Midships Starboard*





*Seguin - Wheelhouse*



**GOLD**

**Category III Operational Models**

**INTERMEDIATE**

CATEGORY III OPERATIONAL 1/24

ENIS KORAL ***YENIKAPI*** STEAM TUGBOAT











**GOLD**

**Category IV Dioramas**

**INTERMEDIATE**

FANTASY DIORAMA 1/72

**KEVIN HUDSON      PAMELIA**







**GOLD**

**Category IV Dioramas**

**ADVANCED**

DIORAMA  $3/16'' = 1' (1/64)$

JOHN POCIUS    ***FRED MARTIN SCHOONER***









**GOLD**

**Category IV Dioramas**

**ADVANCED**

DIORAMA  $3/32" = 1' (1/32)$

JOHN POCIUS ***PIRATE AND RINKY  
DINK***









THAT'S ALL FOLKS

SEE YOU NEXT YEAR IN PERSON !

MAY 20-22, 2022 - OUR USUAL 3<sup>RD</sup> WEEKEND  
IN MAY

THANKS AGAIN TO OUR JUDGES

EDMUND URBANCZYK

BOB FILIPOWSKI

RICK SZYDELKO