



## American Heritage Merit Badge Visit Supplement

The following activities meet the requirements for the Boy Scout Merit Badge: American Heritage. Visiting the Museum or participating in the Overnight Education Program meets two of the requirements. Many of the remaining activities will have to be completed on your own or as a troop. For your convenience, documents and links to many of the remaining requirements can be found on the Wisconsin Maritime Museum website at [www.wisconsinmaritime.org](http://www.wisconsinmaritime.org).

**3b.** Visit our website for links to the following documents: the flag, the Pledge of Allegiance, the seal, the motto, and the national anthem.

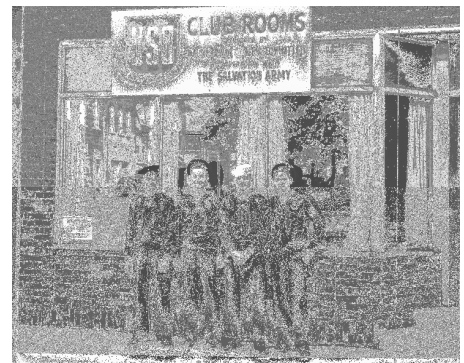
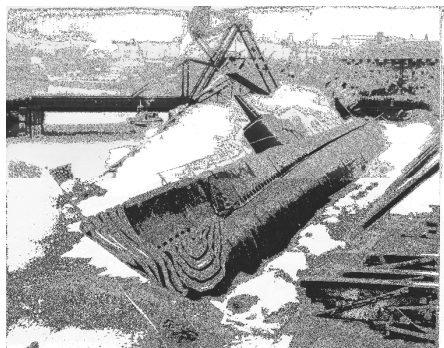
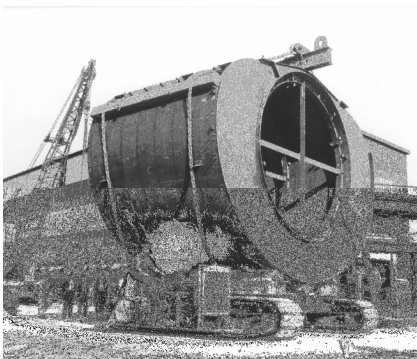
**4a.** Visit our website for a link to the National Register of Historic Places website. USS *Cobia* was designated a National Historic Landmark in 1996.

**4b.** While visiting the museum and touring USS *Cobia*, you will learn about submarine building in Manitowoc and the War's impact on the community and region. You will also learn about what life was like aboard a World War II submarine and how submarines played an important role in the winning of World War II.



### Submarine Building in Manitowoc - Impact on Shipyard and Community

- The Manitowoc Shipbuilding Company employed 7,000 workers (men and women) who worked 7 days a week, 365 days a year.
- Submarines were launched sideways because of the narrow Manitowoc River. Traditionally submarines were launched stern first.
- Submarines were built in sections indoors because of the harsh Wisconsin winters. Special cranes were built to transport the large section to the keel blocks (launching platform) where they were welded together.
- The shipyard used better welding techniques (versus other shipyards) so Manitowoc- built submarines had stronger welds and were known for being a better quality.
- The submarines were placed on a floating dry dock to be shipped down the Mississippi River to the Gulf of Mexico and then onto the Pacific Ocean.





**Manitowoc Shipbuilding Company 1940's**

**4d.** Participate in the Overnight Education Program. For more information, visit our website.

**5a.** Watch a World War II submarine movie. Use what you learned during your visit to find similarities or inaccuracies. Visit our website for a list of WW II submarine movies.